

APO ENCLOSURES

APO - Modular polyester boxes - Complete with Base and Grey Lid

IEC 60439-1 EN 60439-1 The range consists of nine boxes based on the 300 and 185 mm modules.
 IEC 60529 EN 60529 The bases are made of grey (RAL 7036), hot moulded glass fibre reinforced polyester, dyed in
 IEC 62208 EN 62208 The cover is made of either transparent polycarbonate or opaque grey



Item Code Grey	6-Digit	Product Code	Dimensions (mm)	IP Rating
E/010005-100	856048	APO 1	H: 186 W: 151 D: 140	IP 67
E/010035-100	856049	APO 31	H: 302 W: 186 D: 175	IP 67
E/010045-100	856050	APO 41	H: 302 W: 302 D: 175	IP 67
E/010075-100	856051	APO 71	H: 372 W: 302 D: 175	IP 67
E/010055-100	856052	APO 51	H: 488 W: 302 D: 175	IP 67
E/010085-100	856053	APO 81	H: 558 W: 302 D: 175	IP 67
E/010065-100	856054	APO 61	H: 603 W: 302 D: 175	IP 67
E/010115-100	856055	APO 11	H: 603 W: 372 D: 175	IP 67
E/010125-100	856056	APO 12	H: 603 W: 603 D: 175	IP 67

APO - Modular polyester boxes - Complete with Base and Transparent Lid

IEC 60439-1 EN 60439-1 The range consists of nine boxes based on the 300 and 185 mm modules.
 IEC 60529 EN 60529 The bases are made of grey (RAL 7036), hot moulded glass fibre reinforced polyester
 IEC 62208 EN 62208 The cover is made of either transparent polycarbonate or opaque grey



Item Code Clear	6-Digit	Product Code	Dimensions (mm)	Price Grey
E/010205-100	856057	APO 1	H: 186 W: 151 D: 140	IP 66
E/010235-100	856058	APO 31	H: 302 W: 186 D: 175	IP 66
E/010245-100	856059	APO 41	H: 302 W: 302 D: 175	IP 66
E/010275-100	856060	APO 71	H: 372 W: 302 D: 175	IP 66
E/010255-100	856061	APO 51	H: 488 W: 302 D: 175	IP 66
E/010285-100	856062	APO 81	H: 558 W: 302 D: 175	IP 66
E/010265-100	856063	APO 61 (CD: 45mm)	H: 603 W: 302 D: 175	IP 66
E/010315-100	856064	APO 11	H: 603 W: 372 D: 175	IP 66
E/010325-100	856065	APO 12	H: 603 W: 603 D: 175	IP 66

APO - Modular Base



Item Code	6-Digit	Description
E/010005-099	856000	APO 1 Base
E/010035-099	856001	APO 31 Base
E/010045-099	856002	APO 41 Base
E/010075-099	856003	APO 71 Base
E/010055-099	856004	APO 51 Base
E/010085-099	856005	APO 81 Base
E/010065-099	856006	APO 61 (CD: 45mm) Base
E/010115-099	856007	APO 11 Base
E/010125-099	856008	APO 12 Base

APO - Cover - Grey



Item Code Grey	6-Digit	Description
E/010001-105	856025	APO 1 Cover
E/010031-105	856026	APO 31 Cover
E/010041-105	856027	APO 41 Cover
E/010071-105	856028	APO 71 Cover
E/010051-105	856029	APO 51 Cover
E/010081-105	856030	APO 81 Cover
E/010061-105	856031	APO 61 Cover
E/010111-105	856032	APO 11 Cover
E/010121-105	856033	APO 12 Cover



APO - Cover - Clear			
Item Code Clear	6-Digit	Description	
E/040780-077	851196	APO 1 Cover	
E/040540-086	851173	APO 31 Cover	
E/047000-093	851277	APO 41 Cover	
E/040560-092	851176	APO 71 Cover	
E/010051-084	852092	APO 51 Cover	
E/040771-084	851193	APO 81 Cover	
E/048000-084	851282	APO 61 Cover (80mm Standard Depth)	
E/048000-090	851283	APO 61 Cover (45mm Reduced Depth)	
E/048520-084	851290	APO 11 Cover	
E/046600-084	852280	APO 12 Cover	



APO - Depth Extension Frame			
Item Code Grey	6-Digit	Description	
E/010111-016	856040	APO 1 Depth Extension Frame 35mm	
E/010031-016	856041	APO 31 Depth Extension Frame 35mm	
E/010041-016	856042	APO 41 Depth Extension Frame 35mm	
E/010071-016	856043	APO 71 Depth Extension Frame 35mm	
E/010081-016	856044	APO 81 Depth Extension Frame 60mm	
E/010061-016	856045	APO 61 Depth Extension Frame 60mm	
E/010111-016	856046	APO 11 Depth Extension Frame 60mm	
E/010121-016	856047	APO 12 Depth Extension Frame 60mm	



Series APO Hinges				
Item Code	6-Digit	Description	Use With APO	
E/010000-005	856109	Hinge Type A	All APO with Grey Cover	
E/010000-091	856110	Hinge Type B	APO 1 with Grey Cover + depth extension	
E/010000-089	856111	Hinge Type C	APO with Grey Cover & Depth Ext.(excl APO1)	
E/010000-086	852005	Hinge Type D	All APO with Polycarb. Cover	
E/010000-088	856113	Hinge Type E	APO 1 with Clear Cover & Depth Ext.	
E/010000-087	852006	Hinge Type F	All excl.APO1+Clear Cover & Depth Ext.	
E/041532-000	851268	Cov. Hinges (2)	-	



Series APO Accessories			
Item Code	6-Digit	Description	
E/010000-125	852014	APO Blind End-Plate 300mm	
E/010000-145	852018	APO Blind End-Plate 370mm	
E/010000-100	856106	APO Coupling Frame 185mm	
E/010000-120	856107	APO Coupling Frame 300mm	
E/010000-140	856108	APO Coupling Frame 370mm	
E/041525-050	851266	APO Mounting Bracket Set (4) Polymide	
E/010000-221	852025	APO Mounting Bracket Set (4) Stainless Steel (304)	
E/041519-155	851255	APO Slotted Screw	
E/013901-013	851026	APO Threaded Insert Dodge M4	

Series APO Chassis Plates			
Item Code	Description		
AE0166	AP01	140 X 120	1.6mm Mild Steel - Painted
AE0167	AP011	555 X 325	1.6mm Mild Steel - Painted
AE0168	AP012	555 X 555	1.6mm Mild Steel - Painted
AE0169	AP031	265 X 150	1.6mm Mild Steel - Painted
AE0170	AP041	265 X 265	1.6mm Mild Steel - Painted
AE0171	AP051	450 X 265	1.6mm Mild Steel - Painted
AE0172	AP061	555 X 250	1.6mm Mild Steel - Painted
AE0173	AP071	335 X 265	1.6mm Mild Steel - Painted
AE0174	AP081	520 X 265	1.6mm Mild Steel - Painted

Series APO Gland Plate		
Item Code	Description	
APGP185	185MOD - 135mm x 90mm 1.6mm Gal. Steel	
APGP300	300MOD - 250mm x 90mm 1.6mm Gal. Steel	
APGP370	370MOD - 320mm x 90mm 1.6mm Gal. Steel	

ARIA ENCLOSURES

ARIA - Modular polyester cabinets

- IEC 60439-1 EN 60439-1
- IEC 60529 EN 60529
- IEC 62208 EN 62208
- IP65 - 1 Point Locking
- IP66- 3 Point Locking
- The range is available in seven sizes, ranging from 300 x 200 to 1000 x 800 mm.
- The cabinets are made of light-grey (RAL 7035) hot moulded, glass fibre reinforced polyester.
- Resists temperatures up to 70 °C in continuous use (peak temperatures up to 150 °C).
- Self extinguishing and halogen-free.
- Cabinets are maintenance free and corrosion resistant

Note: Available with window cutout on request



Item Code	6-Digit	Product Code	Dimensions (mm)	IP Rating
E/054032-110	831025	ARIA 32	H: 315 W: 215 D: 170	IP 65
E/054043-110	831035	ARIA 43	H: 415 W: 315 D: 170	IP 65
E/054054-130	831052	ARIA 54	H: 515 W: 415 D: 230	IP 66
E/054064-130	831065	ARIA 64	H: 615 W: 415 D: 230	IP 66
E/054075-130	831081	ARIA 75	H: 735 W: 535 D: 270	IP 66
E/054086-130	831098	ARIA 86	H: 835 W: 635 D: 300	IP 66
E/054108-130	831112	ARIA 108	H: 1035 W: 835 D: 300	IP 66

ARIA - Inner Cover Plates



Item Code	6-Digit	Description
E/054032-150	831028	ARIA 32 Inner Cover Plate - Plain
E/054043-150	831039	ARIA 43 Inner Cover Plate - Plain
E/054054-150	831055	ARIA 54 Inner Cover Plate - Plain
E/054064-150	831068	ARIA 64 Inner Cover Plate - Plain
E/054075-150	831084	ARIA 75 Inner Cover Plate - Plain
E/054086-150	831101	ARIA 86 Inner Cover Plate - Plain
E/054108-150	831115	ARIA 108 Inner Cover Plate - Plain

Surface Mounted Windows - IP67



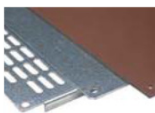
Item Code	6-Digit	Description
E/080200-101	866001	Polycarbonate Window - 240mm x 189mm- Screw-in Kit

Series ARIA Accessories



Item Code	6-Digit	Description
E/054000-107	831000	ARIA Set Fixing Lugs (4) Stainless Steel (304)
E/054000-108	831001	ARIA Set Fixing Lugs (4) Polyimide
E/054000-143	831008	ARIA Lock 3mm Double Bit (Butterfly) w 1 Key
E/001021-020	832000	ARIA Drawing Pocket

Series Aria Chassis Plates



Item Code	6-Digit	Description
AE0178	ARIA 32	150 X 250 1.6mm Mild Steel - Painted
AE0179	ARIA 43	350 X 250 1.6mm Mild Steel - Painted
AE0180	ARIA 54	450 X 345 1.6mm Mild Steel - Painted
AE0181	ARIA 64	550 X 345 1.6mm Mild Steel - Painted
AE0182	ARIA 75	668 X 468 1.6mm Mild Steel - Painted
AE0183	ARIA 86	764 X 564 1.6mm Mild Steel - Painted
AE0184	ARIA 108	775 X 975 1.6mm Mild Steel - Painted

MULTIBOX ENCLOSURES

MultiBox - Small multipurpose boxes

- IEC 60529 EN 60529
- IEC 62208 EN 62208
- IEC 62262 EN 62262
- IP65 - 1 Point Locking
- IP66- 3 Point Locking
- Colour: Grey RAL 7035
- Polystyrene (Polycarbonate available on request)
- Resists temperatures up to 70 °C
- Self extinguishing and halogen-free.
- Ui = 1000V

Note: All boxes have metric cutouts, allowing for easy firmment of glands



Item Code	6-Digit	Product Code	Dimensions (H/L/D)	IP Rating
861628	861628	MB42	H: 130mm W: 94mm D: 57mm	IP66 - IK07
861624	861624	MB33	H: 110mm W: 110mm D: 60mm	IP66 - IK07
861626	861626	MB33H	H: 110mm W: 110mm D: 90mm	IP66 - IK07
861640	861640	MB53	H: 180mm W: 110mm D: 90mm	IP66 - IK07
861646	861646	MB65	H: 180mm W: 180mm D: 90mm	IP66 - IK07
861650	861650	MB65H	H: 180mm W: 180mm D: 165mm	IP66 - IK07
861654	861654	MB75	H: 254mm W: 180mm D: 90mm	IP66 - IK07
861656	861656	MB75H	H: 254mm W: 180mm D: 111mm	IP66 - IK07
861662	861662	MB87	H: 361mm W: 254mm D: 111mm	IP66 - IK07

EC Steel Enclosures

W-Range Enclosures

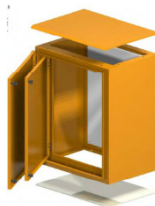
- IP 65 Construction
- Material : 1.6mm Mild steel.
- Standard colours : (B26) Orange. • Optional colours available.
- Finish : Powder coated
- Optional Extra : Innerdoor to be specified and ordered separately



Code	Dimensions (H/L/D)	Chassis Size	Price w/o ID	Price c.w ID
W34	H: 400mm W: 300mm D: 200mm	215 x 315 mm		
W46	H: 600mm W: 400mm D: 250mm	315 x 515mm		
W57	H: 700mm W: 500mm D: 300mm	415 x 615mm		
W68	H: 800mm W: 600mm D: 300mm	515 x 715 mm		
W710	H: 1000mm W: 700mm D: 300mm	615 x 915mm		
W811	H: 1100mm W: 800mm D: 300mm	715 x 1015mm		

Wall Mount Drive Range Enclosures

- IP 65 Construction
- Material : 1.6mm Mild steel.
- Standard colours : (B26) Orange. • Optional colours available.
- Finish : Powder coated
- Optional Extra : Innerdoor to be specified and ordered separately
- Extra Depth for VSD applications



Code	Dimensions (H/L/D)	Chassis Size	Price w/o ID	Price c.w ID
WDP68	H: 800mm W: 600mm D: 400mm	515 x 715 mm		
WDP710	H: 1000mm W: 700mm D: 450mm	615 x 915 mm		
WDP811	H: 1100mm W: 800mm D: 500mm	715 x 1015mm		

S-Range Enclosures

- IP 54 Construction
- Material : 1.6mm Mild steel.
- Standard colours : (B26) Orange. • Optional colours available.
- Finish : Powder coated



Code	Dimensions (H/L/D)	Chassis Size	Price w/o ID	Price c.w ID
S0	H: 300mm W: 200mm D: 115mm	140 x 240mm		
S1	H: 350mm W: 250mm D: 145mm	190 x 290 mm		
S2	H: 450mm W: 300mm D: 195mm	240 x 390mm		
S3	H: 550mm W: 400mm D: 195mm	340 x 490mm		
S4	H: 650mm W: 450mm D: 245mm	390 x 590mm		
S5	H: 750mm W: 550mm D: 245mm	490 x 690mm		
S6	H: 950mm W: 700mm D: 245mm	640 x 890mm		
S7	H: 1150mm W: 850mm D: 245mm	790 x 1090		

SS-Range Stainless Steel Enclosures

- IP 65 Construction
- Material : 304 Stainless Steel.
- Stainless steel locks & hinges.
- Finish : Linished.



Code	Dimensions (H/L/D)	Chassis Size	Price w/o ID	Price c.w ID
SS0	H: 300mm W: 200mm D: 115mm	140 x 240mm		
SS1	H: 350mm W: 250mm D: 145mm	190 x 290 mm		
SS2	H: 450mm W: 300mm D: 195mm	240 x 390mm		
SS3	H: 550mm W: 400mm D: 195mm	340 x 490mm		
SS4	H: 650mm W: 450mm D: 245mm	390 x 590mm		
SS5	H: 750mm W: 550mm D: 245mm	490 x 690mm		
SS6	H: 950mm W: 700mm D: 245mm	640 x 890mm		
SS7	H: 1150mm W: 850mm D: 245mm	790 x 1090		



F-Range Floor Standing Enclosures

- IP 54 Construction
- Material : 2mm Mild steel with 3 fixed sides.
- Standard colours : (B26) Orange. • Optional colours available.
- Finish : Powder coated
- Includes 100mm plinth, fixed chassis plate, removable top and bottom glandplate, lockable 3 point leverlock system,

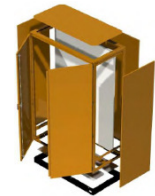
Code	Dimensions (H/L/D) Excl Plinth	Chassis Size
F20-10-6	H: 2000mm W: 1000mm D: 600mm	1910 x 910 mm
F18-8-6	H: 1800mm W: 800mm D: 600mm	1710 x 710 mm
F18-8-4	H: 1800mm W: 800mm D: 400mm	1710 x 710 mm
F16-6-4	H: 1600mm W: 800mm D: 400mm	1510 x 510 mm
F14-8-4	H: 1400mm W: 800mm D: 400mm	1310 x 710 mm



Universal-Range Floor Standing Enclosures

- IP 42 Construction
- Material : 2mm Mild steel
- Standard colours : (B26) Orange. • Optional colours available.
- Finish : Powder coated
- Single Front Door with Back Cover
- Combinations made to order.
- incl 100mm Plinth

Code	Dimensions (H/L/D) Excl Plinth
USF-20-4-6	H: 2000mm W: 400mm D: 600mm
USF-20-6-6	H: 2000mm W: 600mm D: 600mm
USF-20-6-8	H: 2000mm W: 600mm D: 800mm
USF-20-8-6	H: 2000mm W: 800mm D: 600mm



Universal-Range Double Door Floor Standing Enclosures

- IP 42 Construction
- Material : 2mm Mild steel
- Standard colours : (B26) Orange. • Optional colours available.
- Finish : Powder coated
- Double Front Door with Back Cover
- Combinations made to order.
- incl 100mm Plinth

Code	Dimensions (H/L/D) Excl Plinth
UDF-20-8-8	H: 2000mm W: 800mm D: 800mm
UDF-20-9-6	H: 2000mm W: 900mm D: 600mm
UDF-20-12-6	H: 2000mm W: 1200mm D: 600mm



JDM Distribution Boards

- IP 4X Construction
- Material : 1.2mm Mild steel.
- Standard colours : White
- Optional colours available.
- Available with Minirail (HY-MAG) on request
- Custom sizes available on request

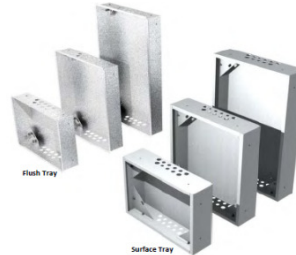
Code	Dimensions (H/L/D)	NO. of Way DIN 18mm
JDM 1 DB	H: 357mm W: 500mm D: 107mm	18 (1 row x 18)
JDM 2 DB	H: 557mm W: 500mm D: 107mm	36 (2 rows x 18)
JDM 3 DB	H: 775mm W: 500mm D: 107mm	54 (3 rows x 18)



JDM Distribution Boards - Flush Mount

- IP 4X Construction
- Material : 1.2mm Mild steel.
- Standard colours : White
- Optional colours available.
- Available with Minirail (HY-MAG) on request
- Custom sizes available on request

Code	Dimensions (H/L/D)	Type
JDM 1 FT	H: 303mm W: 446mm D: 100mm	Flush
JDM 2 FT	H: 503mm W: 446mm D: 100mm	Flush
JDM 3 FT	H: 723mm W: 446mm D: 100mm	Flush
JDM 1 ST	H: 357mm W: 500mm D: 107mm	Surface
JDM 2 ST	H: 557mm W: 500mm D: 107mm	Surface
JDM 3 ST	H: 775mm W: 500mm D: 107mm	Surface





Viper-Range Distribution Boards			
<ul style="list-style-type: none"> • IP 65 Construction • Material : 1.2mm Mild steel • Standard colours : (B26) Orange. • Optional colours available. • Code O : Enclosure is fitted with a roof, Code I : Enclosure is fitted with a top plate. 		<ul style="list-style-type: none"> • Available with Minirail (HY-MAG) on request 	
Code	Dimensions (H/L/D)	NO. of Way DIN 18mm	
VIP 4-6 O/I	H: 600mm W: 400mm D: 200mm	26 (2 rows x 13)	
VIP 5-3 O/I	H: 350mm W: 500mm D: 200mm	18 (1 rows x 18)	
VIP 4-9 O/I	H: 900mm W: 400mm D: 200mm	39 (3 rows x 13)	
VIP 5-9 O/I	H: 900mm W: 500mm D: 200mm	54 (3 rows x 18)	
VIP 6-9 O/I	H: 900mm W: 600mm D: 200mm	63 (3 rows x 21)	
VIP 8-9 O/I	H: 900mm W: 800mm D: 200mm	99 (3 rows x 33)	



1150 DB-Range Distribution Boards			
<ul style="list-style-type: none"> • IP 65 Construction • Material : 1.6mm Mild steel Door & 1.2mm Mild steel enclosure. • Standard colours : (B26) Orange. • Optional colours available. • Code O : Enclosure is fitted with a roof, Code I : Enclosure is fitted with a top plate. 		<ul style="list-style-type: none"> • Available with Minirail (HY-MAG) on request 	
Code	Dimensions (H/L/D)	NO. of Way DIN 18mm	
1150 DB 4-11 O/I	H: 1150mm W: 400mm D: 300mm	52 (4 rows x 13)	
1150 DB 5-11 O/I	H: 1150mm W: 500mm D: 300mm	72 (4 rows x 18)	
1150 DB 6-11 O/I	H: 1150mm W: 600mm D: 300mm	84 (4 rows x 12)	
1150 DB 8-11 O/I	H: 1150mm W: 800mm D: 300mm	132 (4 rows x 33)	

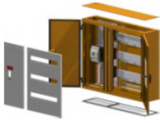
Customized DB's available on request. Use any combination of VIP or 1150 DB's (side-side, top-bottom) to create a DB to your requirements. Incomers can be accommodated in any of these panels. Please contact Electro Contact for further information and design assistance.



DBC-Range Distribution Boards Combos			
<ul style="list-style-type: none"> • IP 65 Construction • Material : 1.6mm Mild steel Door & 1.2mm Mild steel enclosure. • Standard colours : (B26) Orange. • Optional colours available. • Code O : Enclosure is fitted with a roof, Code I : Enclosure is fitted with a top plate. • Optional pre-configured copper for GE FG400/630 MCCB's available (copper set & MCCB to be ordered seperately) • Can be manufactured for any circuit breakers type 		<ul style="list-style-type: none"> • Available with Minirail (HY-MAG) on request 	
Code	Dimensions (H/L/D)	NO. of Way DIN 18mm	
DBC 1000 O/I	H: 1150mm W: 1000mm D: 300mm	84 (4 rows x 21)	
DBC 1200 O/I	H: 1150mm W: 1200mm D: 300mm	132 (4 rows x 33)	



Copper Set for DBC Range (GE Record Plus FG400/630)			
Code	Description	Copper Size	
DBCCS	Copper set for FG400/FG630	30 x 10 mm	



SDB-Range Enclosures - Indoor Only - c/w Incomer MCCB & Copper busbar			
<ul style="list-style-type: none"> • IP 54 Construction • Material : 1.6mm Mild steel.. • Standard colours : (B26) Orange. • Optional colours available. • Complete with adjustable incomer breaker and copper. Dimensions (H/L/D) - H: 800 W: 900 D: 200mm 		<ul style="list-style-type: none"> • Available with Minirail (HY-MAG) on request 	
Code	Incoming Breaker	NO. of Way DIN 18mm	
SDB-125-160A	FEV36TA160KF	63 (3 rows x 21)	
SDB-160A-200A	FEV36TA200KF	63 (3 rows x 21)	
SDB-200-250A	FEV36TA250KF	63 (3 rows x 21)	
SDB-250A Isolator	FEY306D250KF	63 (3 rows x 21)	



LVW-Range Distribution Boards - Floor Mount

- IP 65 Construction
- Material : 1.6mm Mild steel
- Standard colours : (B26) Orange. • Optional colours available.
- Complete with pre-configured copper & tails
- Available with Minirail (HY-MAG) on request
- Weatherproof
- **Base Height : 400mm**
- **Indicated dimensions exclude base height**

Code	Dimensions (H/L/D)	NO. of Way DIN 18mm	
LVW44	H: 1400mm W: 400mm D: 400mm	78 (6 rows x 13)	
LVW45	H: 1400mm W: 500mm D: 400mm	108 (6 rows x 18)	
LVW46	H: 1400mm W: 600mm D: 400mm	126 (6 rows x 21)	
LVW48	H: 1400mm W: 800mm D: 400mm	198 (6 rows x 33)	

Customized DB's available on request. Use any combination LVW DB's (side-side) to create a DB to your requirements. Incomers can be accommodated in any of these panels. Please contact Electro Contact for further information and design



LVC-Range Distribution Boards - Floor Mount

- IP 65 Construction
- Material : 1.6mm Mild steel
- Standard colours : (B26) Orange. • Optional colours available.
- Optional pre-configured copper & tails
- for GE Record Plus FG400/630MCCB available
- Available with Minirail (HY-MAG) on request
- Weatherproof
- **Base Height : 400mm**

Code	Dimensions (H/L/D) - excl base	NO. of Way DIN 18mm	
LVC1000	H: 1400mm W: 1000mm D: 400mm	126 (6 rows x 21)	
LVC1200	H: 1400mm W: 1200mm D: 400mm	198 (6 rows x 33)	



Copper Set for DBC Range (GE Record Plus FG400/630)

Code	Description	Copper Size	
LVCCS	Copper set for FG400/FG630	30 x 10 mm	